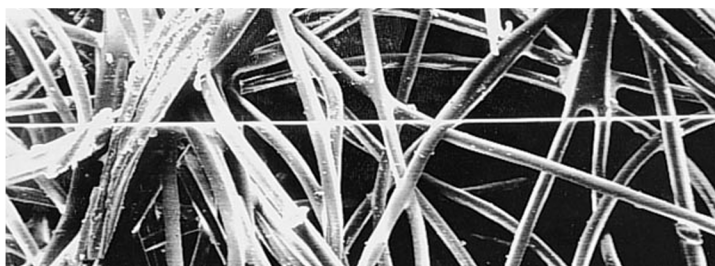




Great Wall Industrial Phenolic Resin Filter Cartridge For Viscous Liquid Filtration

Great Wall Filtration's phenolic resin fiber filter cartridge has good a very good particle removal efficiency. The filter core adopts a unique fiber structure, which realizes a compact structure, uniform micropore size and a high porosity, so that larger particles are attached to the filter core and smaller particles are attached to deeper parts, thus improving retention capacity and usage lifetime. A groove is added to the filter core surface to enlarge the effective filtration area, and the filtration efficiency can reach 99.9%.

In addition, the rigid structure ensures that the filter core will not deform under high working pressure difference. This means that it maintains consistent and constant accuracy throughout its entire service life and will not be affected by reduced filtration efficiency and dirt of a loading soft and deformable filters which will have leakage and penetration issues. fluid viscosity up to 15000 SSU (3,200 cubic centimeters) for filtration.

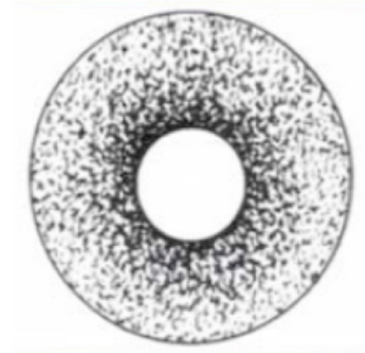
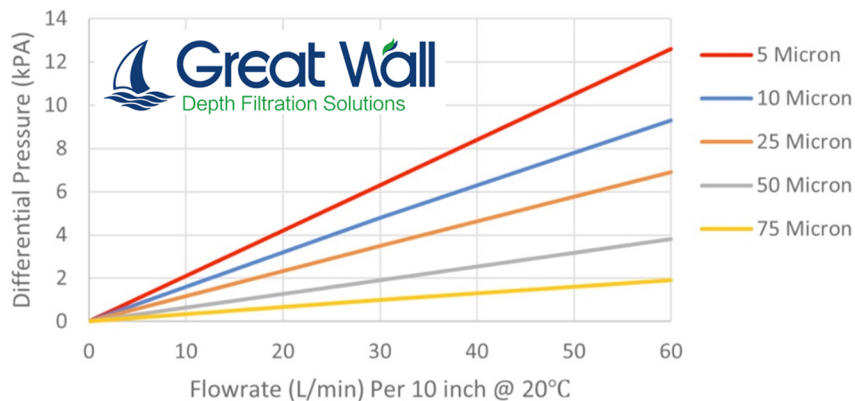


Specifications

Material	Phenolic Resin + Acrylic Fiber
Max . temperature	135°C
Operating pressure	0.45Mpa
Solvent resistance	Expansion rate <2% (ketones, ethers, phenols, alcohols, phenols, etc.)
Anti-shrinkage	No shrinkage,depression
I.D.	29mm
O.D.	65mm
Length	9.75 to 40inch
Micron rating	5,10,25,50,75,100,125,150um

Flow Rate Diagram

RO Permeate (1.005CP) Temperature: 20°C
Filter Length: 10 inch Equipment: Thermometer/Flowmeter



Ordering Information

Model	Micron	Length	Adapter	Sealing Ring
RRB	5 = 5um	248 = 9.75inch	DOE = Double Open End	N = None
	10 = 10um	254 = 10inch	S2F=222/Fin	E = EPDM
	25 = 25um	496 = 19.5inch		
	50=50um	508 =20inch		
	75 = 75um	744 = 29.25inch		
	100=100um	762 =30inch		
	125 = 125um	992 = 39inch		
	150 = 150um	1016 =40inch		

Application Fields of Phenolic Resin Filter Cartridge



Petrochemical Industry



Sewage treatment



Industrial Liquid Filtration



Pharmaceutical Industry

Phenolic resin fiber filter element is widely used in automobile finish, electric permanent paint, printing ink. Coil coating, PU coating, concave convex printing ink, enamel paint, newspaper ink, UV Curing ink, conductive ink, inkjet, flat ink, all kinds of latex, color paste Liquid dye, optical film, organic solvent, petrochemical industry, chemical industry, engine plant cutting Grinding and planning liquid, sewage washing liquid, film developer, magnetic stripe, magnetic ticket, and magnetic card developer are filtered.

Note: Brown phenolic resin filter element is a combination of special fiber and resin. The new formula has many advantages, such as strong chemical corrosion resistance it has a wide range of chemical compatibility, especially suitable for liquid filtration at high temperature, high strength, and high viscosity.



Forms of Supply

Filter media can be manufactured in formats to fit your application, based on customers' requirements, the filter press sizes and types currently in use.

All customary dimensions and any other special formats are virtually available on request, circular papers, papers with various holes, and other customized.

Packaging

Great Wall phenolic resin filter cartridge are packaged in hygienic plastic bags and after that in cartons. Or packaged in rolls with plastic film. Special packaging is available on request.

Contact Us

Because of technological developments related to the products, systems, and/or services described herein, the data and procedures are subject to change without notice.

Great Wall has strong sales team throughout the world. Please consult your Great Wall representative or visit www.filtersheets.com for more information.



Dedicated & Experienced in Filtration Industry

Shenyang Great Wall Filtration Co.,Ltd

☎ Mobile: +86-15566231251

✉ Email: clairewang@sygreatwall.com

🌐 Web: www.filtersheets.com

📍 Add: No.45 Yalujiang North Street, Huanggu District, Shenyang City, Liaoning Province, China

📄 P.C.: 110033