

Lab Qualitative Filter Paper

Laboratory Qualitative Filter Paper



High-grade filter papers are indispensable for routine work in laboratory and industrial applications.

Great Wall can supply you with a broad range of filter papers for myriad filtration tasks and support you in solving all your filtration challenges.

Lab Qualitative Filter Paper Specifications

CP1002 qualitative filter papers are made of 100 % linter cotton, manufactured by modern paper-making technology. This kind of filter paper is generally used for qualitative analysis and solid-liquid separation.

Grade	Speed	Particle retention(μm)	Flow rate ①(s)	Thickness (mm)	Basis weight (g/m ²)	Wet Burst ② mm H ₂ O	Ash< %
1	Medium	11	40-50	0.18	87	260	0.15
2	Medium	8	50-60	0.21	103	290	0.15
3	Medium-slow	6	80-90	0.38	187	350	0.15
4	Very fast	20-25	15-20	0.21	97	260	0.15
5	Very slow	2.5	250-300	0.19	99	350	0.15
6	Slow	3	90-100	0.18	102	350	0.15

① Filtration speed is the time for filtering 10ml (23±1℃) distilled water through 10cm² filter paper.

② Wet Bursting Strength is measured by wet bursting strength instrument.

Lab Qualitative Filter Paper

Ordering Information

Sheets and rolls with custom-made size are available.

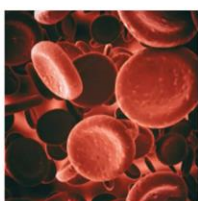
Grade	Size(cm)	Packing
1,2,3,4,5,6	60×60 46X57	60×60
	Φ7,Φ9,Φ11,Φ12.5,Φ15,Φ18,Φ18.5,Φ24	Sheet :100sheets/pack, 10packs/CTN
		Circle :100circles/pack, 50packs/CTN

Lab Qualitative Filter Paper Applications

1. Qualitative analysis pretreatment;
2. Filtration of precipitates, such as ferric hydroxide, lead sulphate, calcium carbonate;
3. Seed testing and soil analysis.



BASIC LAB



BIOTECHNOLOGY



DIAGNOSTIC



FOOD & BEVERAGE



ENVIRONMENT
MONITORING



MICROELECTRONICS



INDUSTRY PROCESS
FILTRATION



TEACHING



Dedicated & Experienced in Filtration Industry

Shenyang Great Wall Filtration Co.,Ltd

☎ Mobile: +86-15566231251

✉ Email: clairewang@sygreatwall.com

🌐 Web: www.filtersheets.com

📍 Add: No.45 Yalujiang North Street, Huanggu District, Shenyang City, Liaoning Province, China

📮 P.C.: 110033